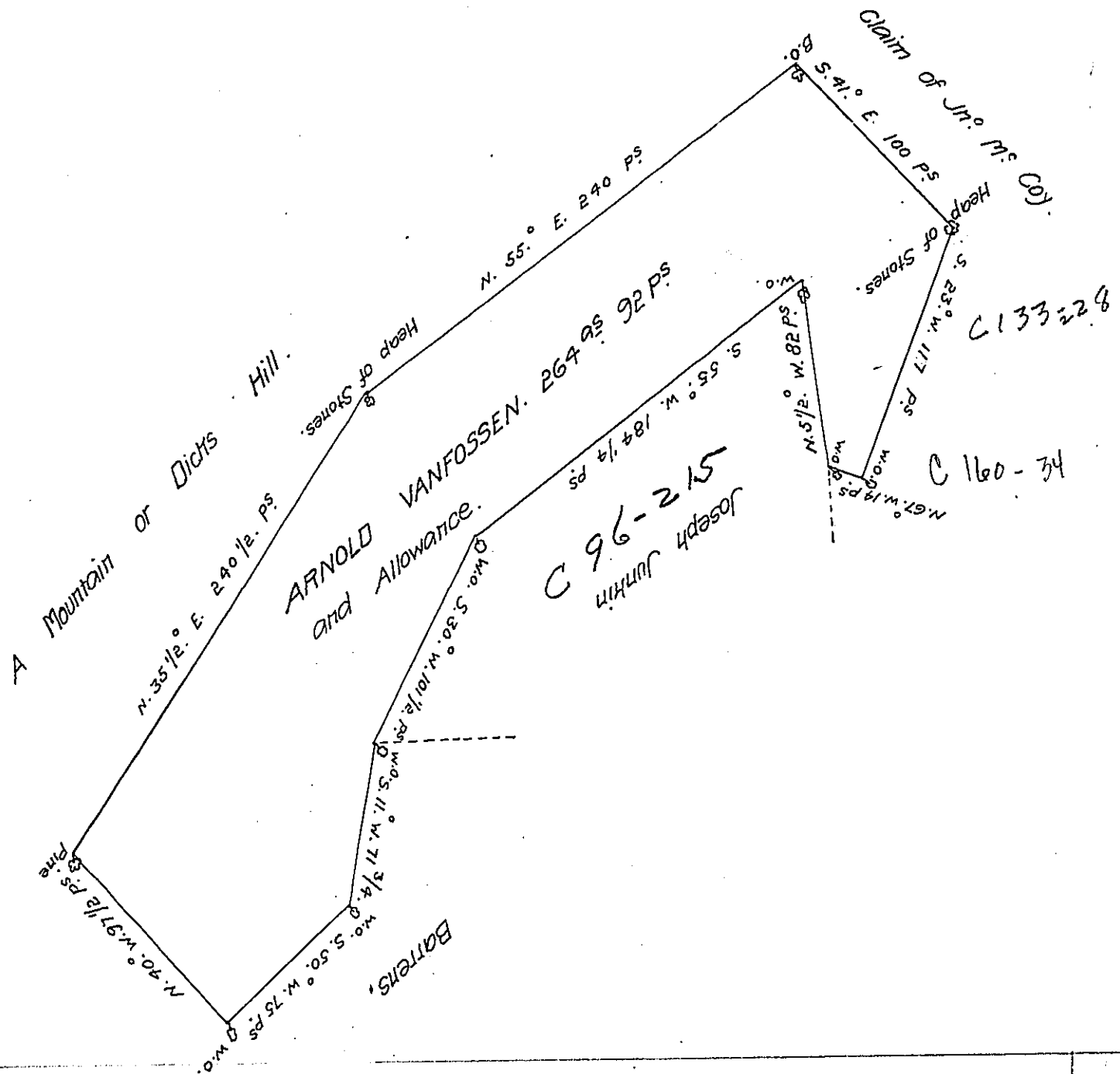


FORM No 1.



A Draught of a Tract of Land Situate in Fye Township Cumberland County Containing Two Hundred and Sixty four Acres and Ninety two Perches and the usual Allowance of Six P. Cent for Roads. Survey'd for Arnold Vanfossen the 8th Day of Decemb<sup>r</sup> 1769 in Pursu-  
 ance of an Order of Survey Dated the 27th Day of Decemb<sup>r</sup> 1766. N-2286.

To John Luthers Esq<sup>r</sup> }  
 Surveyor General. }

John Armstrong D.S.

IN TESTIMONY that the above is a copy of the original remaining on file in the Department of Internal Affairs of Pennsylvania, made conformably to an Act of Assembly approved the 16th day of February, 1833, I have hereunto set my Hand and caused the Seal of said Department to be affixed at Harrisburg, this twenty fourth day of June 1908.

*Murray Houch*  
 Secretary of Internal Affairs.